

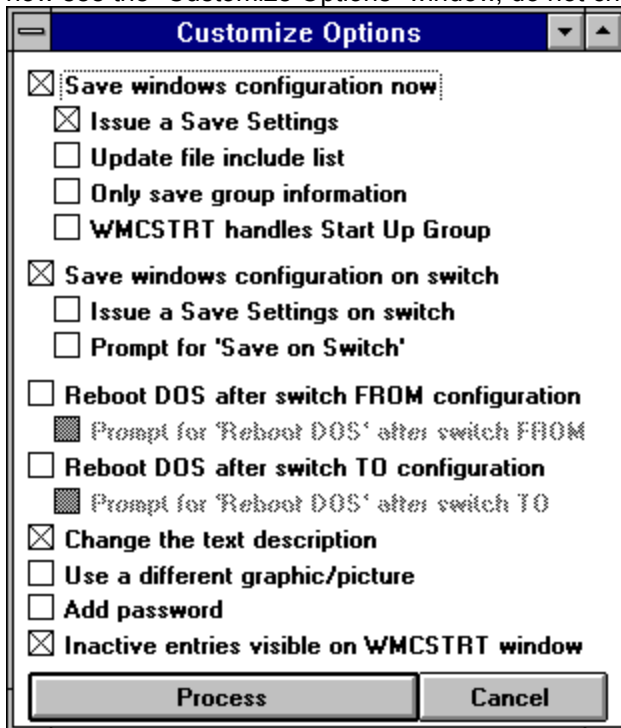
Tutorial for Win Multiple Configurations

Copyright © 1993-1995 JRE Enterprises, All Rights Reserved

This tutorial is meant to give the new user a quick start in using some of the features of WMC and assumes the use of Windows 3.1 with Program Manager as the shell program. We recommend that before using WMC for the first time that a backup of the Windows directory be done.

Lesson 1:

Start WMCSAVE (Save Desktop). You will see the "Save Windows Configuration" window with eight pictures and text boxes. Click with the left mouse button on the top-left picture. You should now see the "Customize Options" window, do not change any of the settings.



Press the *Process* key to save your current Windows configuration. A "Save Settings" will be done by Program Manager, then you will see WMC copying files. After the files are copied, the "Add/Change Text" window will be displayed.

Enter "My Base Windows Configuration" in the text box and press the *Update Text* key. You will notice that the text box of the configuration entry on the "Save Windows Configuration" window has turned yellow. The yellow highlight is used to signify the current active configuration entry.

Click the second picture in the left row of pictures. The "Customize Options" window should appear again. This time, click on the "Only save group information" box, a 'x' should appear in the box. Also click on the "Issue a Save Settings" box, the box should be empty. Press the *Process* key to save your current Windows configuration. After WMC copies the files are copied, the "Add/Change Text" window will be displayed.

Enter "My Base Windows Configuration, Groups Only" in the text box and press the *Update Text* key. You will notice that the text box of the configuration entry on the "Save Windows Configuration" window has turned yellow. This entry is now the current active configuration.

Get the Program Manager window showing and make some changes, such as copying the WMCQSTR icon and WMCQSAV icon from the WMC group to the Main Group. After you have made a few changes, go back to WMCSAVE.

Click the third picture in the left row of pictures. The "Customize Options" window should appear again. Press the *Process* key to save this new Windows configuration. A "Save Settings" will be done by Program Manager, then you will see WMC copying files. After the files are copied, the "Add/Change Text" window will be displayed.

Enter "My Alternate Windows Configuration" in the text box and press the *Update Text* key. You will notice that the text box of the configuration entry on the "Save Windows Configuration" window has turned yellow.

Click the fourth (last) picture in the left row of pictures. The "Customize Options" window should appear again. This time, click on the "Only save group information" box, a 'x' should appear in the box. Also click on the "Issue a Save Settings" box, the box should be empty. Press the *Process* key to save your current Windows configuration. After WMC copies the files are copied, the "Add/Change Text" window will be displayed.

Enter "My Alternate Windows Configuration, Groups Only" in the text box and press the *Update Text* key. You will notice that the text box of the configuration entry on the "Save Windows Configuration" window has turned yellow.

At last, we can now test going back and forth between these saved Windows configurations. Exit Windows and start Windows. If WMCSTRT was placed in the StartUp Group, which it should have been, you will see the "Select Windows Configuration" window with its eight pictures and text boxes. The last text box in the left row should be yellow, indicating that this entry is the current active Windows configuration.

Click with the left mouse button on the top-RIGHT picture, its text should read "This entry is NOT being used.". The following message should appear "Selected configuration does Not exist". Click on the current active Windows configuration, the last picture in the left row. The "Select Windows Configuration" window should disappear and nothing should happen. When you choose the current active configuration, WMC does not need to do anything. Now, exit Windows and start Windows.

Click on the top-LEFT picture (My Base Windows Configuration). WMC will now Restore the configurations files. After the files are copied, WMC will attempt to restart Windows, if it can not a message will be issued and you should manually restart Windows at this point.

After Windows has restarted, you should notice that Program Manager looks as it did before you made any changes. Start WMCSTRT (Restore Desktop) and select the third picture in the left row (My Alternate Windows Configuration). WMC will now restore this entry's configurations files and restart Windows. You should see that Program Manager reflects the changes done earlier.

Take a break, you have earned it!

Lesson 2:

Start WMCSTRT (Restore Desktop). The third picture in the left row should be the active entry. Now lets select a faster method of going from one configuration to another. Click on the second picture in the left row (My Base Windows Configuration, Groups Only). WMC will now delete all the current Program Manager groups, restore the second entry's configuration files and rebuild the Program Manager groups based on these files. You should see your original Program Manager groups, without the need to restart Windows!

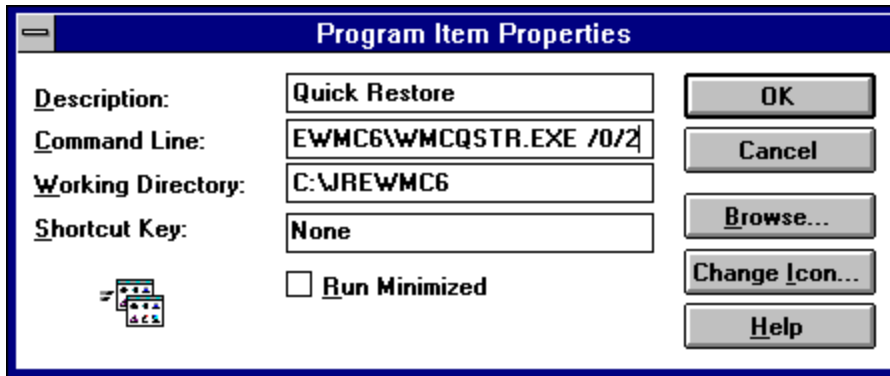
Start WMCSTRT again. Select the last picture in the left row (My Alternate Windows Configuration, Groups Only). WMC should restore the changes to your groups without restarting Windows.

Start WMCSTRT again. Select the top picture in the left row (My Base Windows Configuration). WMC will now restore that configurations files and restart Windows.

Why would you ever want to restart Windows? If you save configurations that have changed the SYSTEM.INI and/or WIN.INI files, such as having configurations with different Video modes, then Windows **MUST** be restarted to implement those types of configuration changes. The "Only save group information" option is what provides the capability to switch configurations without restarting Windows. You would not use this option when saving configurations where the SYSTEM.INI and/or WIN.INI settings have been changed.

Lesson 3:

WMCQSTR (Quick Restore) provides the ability to flip-flop between two configurations. Double-click on the WMCQSTR icon, you should get an error message stating an invalid command string was passed to WMCQSTR. WMCQSTR must be told which two configurations to use. Highlight the WMCQSTR icon and press ALT-ENTER to modify its Program Item Properties. At the end of the "Command Line:" add the switch "/0/2" and press the OK button. This switch tells WMCQSTR to flop between configuration entry 0 and configuration entry 2. These entries should be the "My Base Windows Configuration" and "My Alternate Windows Configuration". Configuration entries are numbered from 0 to 99.

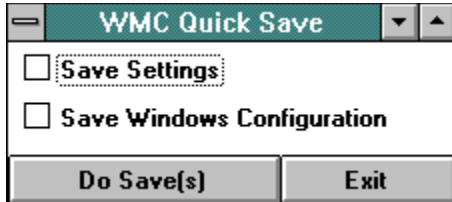


Double-click on the WMCQSTR (Quick Restore) icon and the "My Alternate Windows Configuration" should be restored. You will have to modify the WMCQSTR Program Item Properties here to by adding the "/0/2" switch. Remember that changes made in one configuration are not propagated to the other configurations!

You may want to try doing the same thing for the "My Base Windows Configuration, Groups Only" and "My Alternate Windows Configuration, Groups Only" entries. Do you know what the switch should be for these two? If you answered "/1/3" you are correct!

Lesson 4:

Make one of the "My Alternate ..." entries your active configuration. Make some changes to Program Manager -- change the group layouts, copy/delete some program items or groups. Double-click on the WMCQSAV (Quick Save) icon. This will bring up the following window:



Click on the "Save Settings" box and the "Save Windows Configuration" box so an 'x' appears in both boxes. Click on the Do Save(s) button. WMCQSAV will now issue a Program Manager Save Settings command to flush any changes in memory to the hard drive and will then copy files, saving the changed Windows configuration. WMCQSAV is useful for quickly saving changes made to the Windows. WMCSAVE must still be used to initially save a Windows configuration and must be used if a save option is to be changed.

Lesson 5:

One of the "My Alternate ..." entries should still be your active configuration. Start WMCSAVE and click, with the RIGHT-mouse button, on the active configuration. You will get a message asking if you wish to proceed with deleting the configuration. Click the YES button. The configuration entry will be deleted, the text will change to "This entry is NOT being used.", and no text box will be yellow. At this point, there is no longer an active entry.

Click on the remaining "My Alternate ..." entry with the RIGHT-mouse button and delete it. Exit WMCSAVE and start WMCSTRT. Click on the "My Base Configuration" entry. This configuration will be restored, Windows will restart and you will be back where you started.

At this point, you have tried the basics of WMC and are ready to proceed on your own. Play with the other WMCSAVE options and set up configurations you can really use. We hope you find WMC useful!